

# Coach Holidays and Day Trips 2026

[www.travelcatteralls.co.uk](http://www.travelcatteralls.co.uk)  
01926 813840

Catteralls of Southam

*Pick-ups from Rugby, Southam, Leamington, Warwick and some surrounding villages*



# Welcome to our Holiday and Day Trips Brochure

***We are pleased to offer our programme of Holidays and Day Trips for 2026.***  
*We think there is something of interest for all tastes! Our cheeky tour mascots, Doris and Derek Ducks look forward to once again welcoming you aboard.*

## IMPORTANT INFORMATION BELOW

Excursions are included on all tours unless otherwise stated in the tour information, changes may be made at our discretion.  
To make a booking a non-refundable deposit is required as below:

- **1 or 2 night UK tour:** £100
- **3, 4 or 5 night UK tour:** £120
- **Continental tour:** £200

Due to the low availability of single rooms for our tours and the delay in post arriving – all single room requests will be taken on a provisional basis only, if there is availability, this will be confirmed to you by phone or email. Only then will this become a confirmed booking and a deposit will be required to secure the room.

\*We offer door-to-door service for all our tours of 2 nights or more (some postcodes may incur additional cost).  
Passengers joining at the Bowling Green are requested to be there 10 mins prior to departure time to allow for boarding and loading luggage.

The final balance for your tour is due 8 weeks prior to departure.  
The date of payment will be printed on your invoice and no further reminders will be sent. If you do not pay the outstanding

balance for your holiday on or before the date when it is due, we may cancel your booking and you will be required to pay the cancellation charges detailed.

Period before departure within which written notice of cancellation of holiday is received (with cancellation charge as a % of your holiday cost). All our accommodation comes with en-suite rooms.

<b>More than 56 days before departure</b>	Deposit only
<b>56 days to departure day</b>	100% of holiday cost

***PLEASE NOTE: We do not provide insurance and strongly recommend that all passengers obtain their own for all tours.***



## FEEDER VEHICLES

Our feeder vehicles used for home pick-ups are limited on space and intended for 1 suitcase per person and 1 piece of hand luggage, if you wish to bring a walker with you, passengers must inform us at the time of booking, otherwise we may not be able to accommodate it.

## PLEASE NOTE

Mobility scooters and walkers are carried at our discretion and may incur a charge. ***Mobility scooters must board at Southam.***

If a passenger requires personal assistance (for example, assistance with feeding, dressing, toileting, mobilising) then this passenger must travel with an able-bodied companion or carer and written confirmation that such assistance will be provided for the entirety of the holiday is required at the time of booking. Coach Drivers/Couriers are unable to provide such assistance. Passengers are responsible for their behaviour and hygiene and the effect it may have on others. If you or any other member of your party is abusive, disruptive or behaves in a way that could cause damage or injury to others or affect their enjoyment of their holiday or which could damage property, we reserve the right to terminate your contract with us and we

will have no further liability or obligation to you. The Coach Driver/Courier is entitled to refuse you boarding if in their reasonable opinion you are unacceptably under the influence of drink or drugs or you are being violent or disruptive.

**Please read our Terms and Conditions at the back of the booklet for more information.**



## How to Book *(Please note that Holidays can only be booked through our Southam office)*

*Calling: 01926 813192 / 813840 or visiting our office: 74 Coventry Street, Southam CV47 0EA Or visit one of our booking agents at:*  
**Jordans, 14 High Street, Leamington Spa CV31 3AN**

*Also at: The Visitors Centre at Rugby Library, Little Elborow Street, Rugby CV21 3BZ*  
**Warwick Visitors Centre, Court House, Jury Street, Warwick CV34 4EW**

**If you have any ideas for our Holidays or Day Trip programmes, please email [Michelle@travelcatteralls.co.uk](mailto:Michelle@travelcatteralls.co.uk) or call 01926 813840**



# Isle of Man

*Date: Monday 20th to Friday 24th April 2026*

The mountainous cliff fringed Isle of Man is a stunning destination, with its austere moorlands, wooded glens, sandy beaches and ancient castles.

Staying 4 nights, Half-Board at **The Regency Hotel** in Douglas which is ideally situated overlooking the promenade and Douglas Bay, within easy walking distance of the sights and shopping Douglas has to offer.

**Includes:**

- Laxey Wheel, Tram in Douglas and the Snaefell Mountain Railway
- All excursions are subject to availability and will be confirmed by the driver on the first day of your tour



Sharing Twin / Double • Single Supplement £199 per person



# Lake District

*Date: Monday 4th to Friday 8th May 2026*

Keswick is a pretty market town situated between the mountain of Skiddaw and Derwentwater. There is a pedestrianised shopping area with cafes and shops to browse.

Staying 4 nights, half-board at **The Skiddaw Hotel** which is situated in the heart of the town just a short walk to the shops.

***Includes:***

- Ullswater, Windermere & Boat Cruise, Grasmere & Ambleside
- *All excursions are subject to availability and will be confirmed by the driver on the first day of your tour*



Sharing Twin / Double • No Single Supplement (Limited Availability)

# Bournemouth

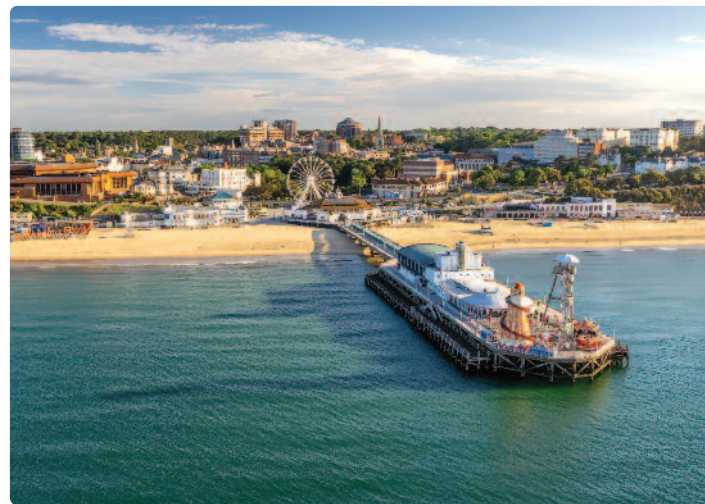
*Date: Monday 11th to Friday 15th May 2026*

Bournemouth is a popular resort with miles of sandy, golden beaches and panoramic views of the coastline, as well as a great selection of shops, restaurants and bars.

Staying 4 nights, Half-Board at **The Cumberland Hotel**, overlooking the Bay. There is complimentary use of the leisure facilities at 'The Resort' which include indoor heated swimming pool, sauna and gym. There is a lift to all floors.

***Includes:***

- Salisbury, Poole and a Coastal Boat Cruise
- *All excursions are subject to availability and will be confirmed by the driver on the 1st day of your tour*



**Sharing Twin / Double • No Single Supplement (Limited Availability)**



# Mystery Spring Special

*Date: Saturday 30th to Sunday 31st May 2026*

Join us for a bank holiday break! We will depart home area 9am and travel to our destination with a visit to a place of interest and lunch stop on the way (Lunch not included). On Sunday we will depart our hotel after breakfast and travel home with a place of interest stop en route.

**Includes:**

- 1 night half-board accommodation with evening meal, excursions
- Pick-ups from Rugby, Southam, Leamington & Warwick only



Sharing Twin / Double • Single Supplement £30 per person



## Gift Vouchers available from £5

For more information call us on 01926 813840  
or email: [Michelle@travelcatteralls.co.uk](mailto:Michelle@travelcatteralls.co.uk)





# Beautiful Belgium

*Date: Monday 1st to Thursday 4th June 2026*

**Lovely Lille** is a historic town tucked in the northern part of France near the border with Belgium. A lively hub with a thriving cultural scene, the capital of the Hauts-de-France region boasts incomparable architectural beauty, heritage and an excellent destination for foodies.

**Historic Bruges** is famous for its well-preserved medieval architecture, picturesque canals, and being a UNESCO World Heritage site. Known for its rich cultural attractions like the Belfry of Bruges, its culinary scene which includes world-famous chocolate, waffles, and beer, and traditional crafts such as lace-making.

**Quirky Ghent** offers a fascinating cultural mix, brimming with trendy, modern urban life. A chilled-out place where anything goes and a city that is friendly, welcoming and where people love the good life. Don't miss the chance to admire the world-famous masterpiece the Mystic Lamb by the Van Eyck brothers.

## ***Includes:***

- Home pick-up (within a Radius of 12 miles of Southam)
  - Ferry Crossing Dover to Calais
  - Visits to Lille, Bruges and free time in Ghent, (optional excursions may be offered by your driver on arrival).
  - 3 nights B&B, staying at the Holiday Inn Gent Expo, located in St. Denijs-Westrem on the outskirts of Ghent
  - All rooms ensuite with tea and coffee making facilities
- \*Tram stop is available next to the hotel, making easy access to Ghent City Centre*



Sharing Twin / Double • Single Supplement £135 per person

# Sidmouth

*Date: Saturday 13th to Wednesday 17th June 2026*

The jewel in East Devon's crown, the unspoilt Regency coastal resort of Sidmouth boasts a fine array of period buildings, beautiful beaches, enchanting gardens, stylish eateries and great shopping. Backed by majestic red cliffs and the green hills of the glorious Sid Valley, it even has its own unique microclimate. This captivating place was once described by the Poet Laureate, John Betjeman, as 'a town caught still in a timeless charm'.

**Royal York & Faulkner Hotel** is situated on the sea front, a short distance from the shops. All rooms are en-suite.

***Includes:***

- 4 nights half-board
- Excursions to include a visit to The Donkey Sanctuary, Boat Cruise on the River Exe



Sharing Twin / Double • No Single Supplement



# Northumberland Delights

*Date: Thursday 25th to Monday 29th June 2026*

Northumbria has everything for a perfect holiday – lush rolling countryside, spectacular forests, glorious sandy beaches, quaint villages, mighty castles, ancient monuments and historic market towns.

Staying 4 nights, Half-Board, at **The White Swan Hotel** which is situated in the pretty market town of Alnwick only 200 yards from the Castle. Step back in time with your meals served in the Olympic Suite, where the original panelling, mirrors and ornate ceiling from RMS Olympic – The Titanic's sister ship creates a setting like no other. *Please note this hotel has no lift but the stairs are wide and not very steep.*

## **Includes:**

- Holy Island of Lindisfarne, Beamish Living Museum and Farne Island Boat Cruise



- All excursions are subject to availability and will be confirmed by the driver on the first day of your tour

Sharing Twin / Double • Single Supplement £176 per person



## Catteralls of Southham

Since 1972, Catteralls have been providing Affordable, Comfortable, Flexible and Reliable coach transport for schools, private groups and on our own Day Trips and UK and European tours.

Email us on [info@travelcatteralls.co.uk](mailto:info@travelcatteralls.co.uk)  
for any of your transport needs





# Great Yarmouth

*Date: Thursday 9th to Monday 13th July 2026*

Great Yarmouth, nestled on the stunning Norfolk coast, is a vibrant resort town offering everything for a memorable holiday. The Norfolk coast is renowned for its miles of golden sandy beaches and beautiful scenery.

Staying 4 nights, Half-Board at **The Prom Hotel**, located on the seafront just a short walk from all the attractions and the towns history.

**Includes:**

- Boat trip on the Norfolk Broads, Norwich & Southwold
- *All excursions are subject to availability and will be confirmed by the driver on the first day of your tour*



Sharing Twin / Double • Single Supplement £104 per person

[www.travelcatteralls.co.uk](http://www.travelcatteralls.co.uk) • Contact us: 01926 813840

# Isle of Wight

*Date: Sunday 9th to Thursday 13th August 2026*

*Date: Monday 26th to Friday 30th October 2026*

Just off the southern coast of England, the Isle of Wight is a little gem boasting chalky cliffs, beautiful shorelines and great attractions.

**The Trouville Hotel**, is perfectly situated on Sandown's seafront, offering a prime location for your Isle of Wight getaway. Enjoy breathtaking panoramic views of Sandown and Shanklin Bay while relaxing on the golden beach opposite.

***Includes:***

- 4 nights half-board accommodation
- Excursions to be confirmed



Sharing Twin / Double • No Single Supplement



# Scarborough

*Date: Monday 10th to Friday 14th August 2026*

Sat on the North Yorkshires Coastline, Scarborough is a seaside town rich in history, beautiful landscapes and stunning beaches. Reignited over by a 12th-century castle, Scarborough centres around a pretty horseshoe-shaped bay lapped by the North Sea.

Staying 4 nights at the **Crown Spa Hotel**, where Victorian Charm meets modern Glamour and where the award-winning spa offers a tranquil escape with various treatments, while the leisure centre features a 40ft. indoor pool and a gym. *\*Charges may apply.*

***Includes:***

- 4 nights half-board accommodation
- Visit to Malton & Whitby
- *All excursions are subject to availability and will be confirmed by your driver on the first day of your tour*



Sharing Twin / Double • Single Supplement £100 per person

[www.travelcatteralls.co.uk](http://www.travelcatteralls.co.uk) • Contact us: 01926 813840



# Cantabria, Spain

*Date: Friday 4th to Saturday 12th September 2026*

The spectacular and beautiful northern Spanish coast has some of the best scenery in Europe!

**Day 1:** Depart home area early morning and travel to Poitiers via Dover/Calais Ferry.

**Day 2:** Depart Poitiers after breakfast and travel to Isla.

**Days 3 to 7:** Excursions to Potes and the Picos Mountains, Santander, Santillana del Mar, Comillas & Cabárceno Natural Park.

**Day 8:** Depart Isla after breakfast and travel to Poitiers with a lunch stop en route

**Day 9:** Travel to Calais to board the ferry to Dover. Travel to home area arriving approximately 10pm.

## **Your hotels:**

The 3-star **Hotel Poitiers** for 1 night outward and return journeys.

**Hotel Olimpo** a 4-star hotel situated on a peninsula overlooking beaches and estuary for 6 nights half-board with 4 course evening meal including wine and mineral water. One evening will feature wine tasting with live music provided on the other evenings.



**£1,259**  
per person

## **Includes:**

- Santander and boat trip around the bay
- Santillana del Mar, a historical town with a selection of sights and shops along narrow cobbled streets. Comillas is a town sheltered by the Picos de Europa Mountains. It has an attractive harbour and beaches with crystal clear waters
- Tour of the Picos Mountains with a stop at the mountain village of Potes then a ride on the Fuente Dé Cable car (*Fuente Dé Cable car 20 Euros payable on the day*)
- Historical Village of Liernales
- Cabárceno Wildlife Park home of Brown Bears and other threatened species in a natural setting

Sharing Twin / Double • Single Supplement £299 per person • Limited sea view rooms available

# Skegness

**Date: Friday 18th to Monday 21st September 2026**

Skegness is a well-known seaside resort on the East Coast with golden sandy beaches and a long picturesque promenade. There are parks and gardens to admire with a long pier.

Staying 3 nights, Half-Board at **The Savoy Hotel**, which is situated a short walk from the pier and town centre.

**Includes:**

- Mablethorpe, Lincoln, Louth and a ride on the Steam Railway
- *All excursions are subject to availability and will be confirmed by the driver on the first day of your tour*



**Sharing Twin / Double • No Single Supplement (Limited Availability)**



# Garden of England, Kent

*Date: Monday 21st to Friday 25th September 2026*

Kent is England's oldest county with a fascinating past. It has an abundance of leafy lanes, lavender fields, orchards, vineyards and hop gardens.

Staying 4 nights, Half-Board at **The Judds Folly Hotel** in 3 acres of grounds, a short drive from Faversham market town. It has a traditional bar, restaurant and a lounge with views over the valley. Outside space for that evening drink (weather permitting) friendly staff and a warm welcome. There's no lift, but 1 upper floor with some courtyard rooms available.

**Includes:**

- Walmer Castle and Gardens, The Romney Hythe Railway *(Faversham Brewery tour will be offered at an additional cost)*
- *All excursions are subject to availability and will be confirmed by the driver on the first day of your tour*



Sharing Twin / Double • No Single Supplement (Limited Availability)

# Mystery Winter Warmer

*Date: Saturday 10th to Sunday 11th October 2026*

Join us on weekend away and beat those winter blues! We will depart home area 9am and travel to our destination with a visit to a place of interest and lunch stop on the way (Lunch not included). On Sunday we will depart our hotel after breakfast and travel home with a place of interest stop en route.

**Includes:**

- 1 night half-board accommodation with evening meal, excursions
- Pick-ups from Rugby, Southam, Leamington & Warwick only



Sharing Twin / Double • Single Supplement £30 per person

## *My Holiday and Day Trip Notes*

---

---

---

---

---



# Newquay

*Date: Monday 12th to Friday 16th October 2026*

Newquay is one of the most popular of Cornwall's north coast resorts, with inviting beaches, maritime heritage, a smugglers past and an abundance of cafes, restaurants and shops. We leave home on Monday morning with a stop en-route for you to purchase some lunch before arriving at the hotel late afternoon.

**The Esplanade Hotel** with views over Fistral beach offers facilities including a swimming pool and jacuzzi for passengers to relax and enjoy.

***Includes:***

- 4 nights half-board accommodation
- Excursions (To be confirmed)



Sharing Twin / Double • Single Supplement £80 per person

# Lytham St. Annes

*Date: Monday 19th to Friday 23rd October 2026*

With an expansive sandy beach, Victorian Pier, Historic Windmill and stylish independent shops, the dual seaside towns of Lytham and St. Annes remind us why we all still love the British Seaside.

**The Inn on the Prom Hotel**, overlooks the Irish Sea and is situated a stones throw away from the sea front, cafes, restaurants and shops.

***Includes:***

- 4 nights half-board accommodation
- Liverpool & boat trip, Blackpool to see the lights and Oswaldtwistle Mill
- *All excursions are subject to change/availability and will be confirmed by your driver on the day of departure*



Sharing Twin / Double • No Single Supplement



# Tenby

*Date: Sunday 1st to Thursday 5th November 2026*

Tenby is an attractive seaside resort on the south coast of Wales with pastel coloured buildings, narrow cobbled streets, fortified medieval walls and shimmering bays.

**The Imperial House Hotel** is built into the ancient stone walls of Tenby, overlooking its beautiful beach with spectacular ocean views.

**Includes:**

- 4 nights half-board accommodation
- Excursions (To be confirmed)



Sharing Twin / Double • Single Supplement £160 per person

# Thursford Christmas Spectacular

*Date: Sunday 29th to Monday 30th November 2026*

Thursford Christmas Spectacular is the largest Christmas theatre Show in the country. Set in the magical surroundings of a lavishly decorated auditorium with thousands of lights, Christmas Trees and festive decorations.

The 3 hour Christmas Musical experience delivers an extravaganza of non-stop singing, dancing, dazzling costumes, music, humour and variety performance from over 130 cast members. Thursford's Christmas Spectacular is a true celebration of the festive season.

We depart home area at approximately 9am with a stop en route before arriving for a 1 night Half-Board stay at the **Knights Hill Hotel**, King's Lynn, a former hunting lodge and working farm. Late lunch will be served on arrival before we depart for the evening performance of the Christmas Spectacular. After breakfast the next day we will depart for home, with a stop en route to stretch your legs, arriving back into your home area for approximately 17:30pm.



Sharing Twin / Double • No Single Supplement

[www.travelcatteralls.co.uk](http://www.travelcatteralls.co.uk) • Contact us: 01926 813840



# Edinburgh Christmas Market

*Date: Sun 29th November to Wed 2nd December 2026*

Edinburgh's Christmas Market is located in the historic city centre and is the ultimate destination for festive fun. Edinburgh offers everything you would expect at a traditional Christmas Market, funfair rides, spectacular outdoor events, delicious food and drink and so much more.

Staying 3 nights B&B at **The Holiday Inn Express**, a short distance from the Palace of Holyrood House, the late Queens official Scottish Residence and less than half an hour away from Edinburgh Castle and The Royal Botanic Gardens (*admissions not included*).



Sharing Twin / Double • Single Supplement £164 per person

## Llandudno Turkey & Tinsel

*Date: Monday 7th to Friday 11th December 2026*

Llandudno lies on a wide, gently curving bay between the giant headlands of the Great and Little Orme. With Snowdonia towering in the background, Llandudno is without doubt the 'Queen of Welsh Resorts'. **The Merrion Hotel** is situated on the seafront opposite the pier and the promenade.

**Includes:**

- 4 nights half-board
- Excursions and Christmas Entertainment



**£569**  
per person

Sharing Twin / Double • No Single Supplement

## Weymouth Turkey & Tinsel

*Date: Friday 11th to Monday 14th December 2026*

Weymouth is a classic seaside resort with a splendid esplanade award winning parks and gardens, a historic harbour and large shopping centre. We will be staying at **The Hotel Rex** which is situated on the sea front with views of Weymouth Bay. All rooms are en-suite.

**Includes:**

- 3 nights half-board accommodation
- Christmas entertainment programme
- *Excursions are subject to hotels festive programme and will be confirmed by your driver*



**£340**  
per person

Sharing Twin / Double • No Single Supplement



# ABBA Voyage

*Date: Sunday 26th April 2026*

ABBA VOYAGE sees Agnetha, Bjorn, Benny and Anni-Frid performing once again as a digital version of themselves.

With the finest musicians and songs we all know and have grown to love filling the stadium. A great night out with friends and family.

**Includes:**

- Local pick-ups from Leamington, Southam and Rugby
- Transport to and from the stadium
- Ticket to the event in London

*Please note tickets are non-refundable*



18:00 performance

# Kinky Boots, The Musical

*Date: Tuesday 28th April 2026*

Winner of every major BEST MUSICAL award on Broadway and in the West End.

Kinky Boots is returning to the West End in 2026, playing the London Coliseum, starring Strictly Come Dancing's Johannes Radebe.

Based on the much-loved movie starring Chiwetel Ejiofor, Kinky Boots is the riotously funny show that takes you from the factory floor to the



glamorous catwalks of Milan! Inspired by true events, after inheriting his family's failing shoe factory and with a relationship on the rocks, life is proving to be very challenging for Charlie Price. That is until he meets Lola, a drag queen whose sparkle and unsteady heels might just hold the answer to saving the struggling business.

**£99**  
per person

## ***Includes:***

- Coach travel and ticket to the show
- Pick-ups from Rugby, Southam, Leamington and Warwick
- There is a lift to all floors, however passengers must be able to reach their seat unaided
- Payment in full on booking

*Please note tickets are non-refundable*

**19:30 performance**



## Gift Vouchers available from £5

For more information call us on 01926 813840  
or email: [Michelle@travelcatteralls.co.uk](mailto:Michelle@travelcatteralls.co.uk)





# Day Trips 2026

## Day Excursion Departures and Pick-up Points

Departure times and pick-up locations will be communicated 2 days before or the last working day if your excursion falls on a weekend or Monday. Please do not contact us for times unless you haven't heard from us by the day before.

A valid phone number is required for all bookings. Our main pick-up points are Rugby, Southam, Leamington, Warwick and some of the surrounding villages (please enquire on booking). Long distance day trips may require passengers to board at main stops only to reduce pick-up times. Pick-up points are subject to numbers and tours. We will consider other pick-up points for groups of more than 6 people, please discuss this with us before booking.

Day Trips that include entrance to a venue or require a ticket will close 2 weeks before to enable us to secure our bookings. Where possible, all confirmations will now be sent by email. These do not need to be printed and are for your information only. Late bookings may result in us not being able to pick passengers up at their requested stop.



If you have any ideas for our Holidays or Day Trip programmes, please email [Michelle@travelcatteralls.co.uk](mailto:Michelle@travelcatteralls.co.uk) or call 01926 813840

# 'Get Together' Lunch Club

NEW

**Welcome to Catteralls New Lunch Club**, designed for passengers who would like a regular get together, a chat with familiar faces, a chance to make new friends or just fancy a trip out for lunch.

## How it works?

Passengers will be collected from their local pick-up points and taken to a restaurant, pub or other lunch venue within the local area, for a 2-course meal (drinks are not included) before returning passengers to their original pick-up point. Each run is separate and cannot be combined so please consider this when booking.

*\*Please note this is not the same as a Mystery Lunch Tour and no further locations will be included.*

We will run 3 (one per month, February, March and April).

Each route: Rugby, Leamington and Southam will run three times, with the first outing acting as a trial. If supported, the further dates will follow. Book all three on the same route at the same time to receive a £5 credit towards future trips. Cancellations and refunds remain the same as our normal day trips and are detailed at the back of the brochure.

*\*All venues will be considered and may result in you being taken to somewhere local to your pick up. Requests for further stops within each area will be considered for groups of 4 or more passengers.*

£26  
per person

### Rugby Route

Lawrence Sheriff School  
Rugby Sainsburys • Dunchurch  
Bilton • Hillmorton

10th February • 17th March • 14th April

### Leamington Route

Newbold Terrace • Radford Semele  
Sydenham Shops • Whitnash Plough  
Bull Dog Whitnash • Warwick Tesco  
Lillington Tesco

11th February • 18th March • 15th April

### Southam Route

Southam Bowling Green  
Harbury Village Hall  
Harbury Old New Inn • Stockton  
Bishops Itchington • Long Itchington Pond  
12th February • 19th March • 16th April

## Thenford Gardens with Snowdrops with lunch

Wednesday 28th January 2026

Lord and Lady Heseltine have created a garden of major importance at Thenford, one of the most impressive, varied and fascinating to have been made over the last forty years anywhere in the world. *\*Meal will be served early evening around 5pm.*



Adult: £56  
Senior: £55  
Child: POA

## Mystery Lunch Tour

Monday 2nd February 2026

A Catteralls Classic – a pleasant and scenic drive to a mystery location with a tasty lunch included! These tours are always busy so early booking is advisable. *\*Drinks are not included.*



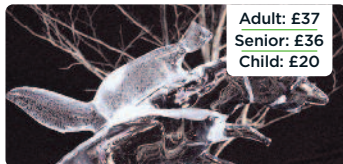
Adult: £36  
Senior: £35  
Child: £15



## York & The York Ice Trail

**Saturday 7th February 2026**

Explore York's historic streets as they come alive for The York Ice Trail 2025, discover secrets of origins long forgotten and tales yet to be told. As you wander through the city, uncover the theme of "Origins," with stunning ice sculptures inspired by legends, myths, and York's rich history. Watch as live ice carving brings these stories to life. When it's time to refuel, indulge



**Adult: £37  
Senior: £36  
Child: £20**

in the finest food-to-go at Shambles Food Court. *\*Note this is a walking trail, passengers will be given maps to follow at your leisure.*

## Brindley Place, Birmingham

**Monday 16th February 2026**

Brindley Place is situated on a lovely canal side location with tree lined squares with restaurants and bars aplenty, only 20 mins walk to the centre of Birmingham and 10 mins walk to the Museum and Art Gallery.



**Adult: £18  
Senior: £17  
Child: £10**

## Birmingham Shopping

**Monday 16th February 2026**

Birmingham has everything to offer for the keen shopper including the worlds biggest Primark! Drop off point will be near New Street Station.



**Adult: £16  
Senior: £15  
Child: £10**

## Melton Mowbray

**Tuesday 17th February 2026**

**Catteralls Favourite with our passengers.** Famous for its Pork Pies and Cheese, Melton Mowbray is a vibrant town offering the hustle and bustle for a great day out. Come and see why this town is known as the Rural Capital of food!



**Adult: £18  
Senior: £17  
Child: £10**

## Birmingham Botanical Gardens

**Monday 16th February 2026**

The Birmingham Botanical Gardens offers something for everyone, with four glasshouses showcasing tropical rainforest to arid desert. A playground, tearoom and a gift shop are set within the most beautiful gardens in the UK.



**Adult: £27  
Senior: £26  
Child: £18**

## Leicester Shopping

**Wednesday 18th February 2026**

Bustling with heritage, culture and shopping - Leicester makes a great day out for all the family. Feel free to explore the National Space Centre, learn about history at the King Richard III Visitor Centre, The Leicester Museum & Art Gallery and Bradgate Park  
*\*Entrance not included.*



**Adult: £18  
Senior: £16  
Child: £10**

## Leicester Space Centre

Wednesday 18th February 2026

The National Space Centre is one of the United Kingdom's leading visitor attractions devoted to space science and astronomy!



Adult: £32  
Senior: £30  
Child: £21

## Dudley Zoo

Friday 20th February 2026

With a rich geological history and situated around the ruins of the 11th century Dudley Castle, Dudley Zoo is home to hundreds of exotic and endangered animals that inhabit the ancient wooded hillside.



Adult: £34  
Senior: £30  
Child: £21

## Cotswold Designer Outlet, Dobbies and/or Tewkesbury

Thursday 19th February 2026

**Winter Special!** The long-awaited Cotswolds Designer Outlet has officially opened its doors just outside Tewkesbury, offering a refined new shopping and leisure destination. Tewkesbury is an historic riverside town in Gloucestershire. Tewkesbury Abbey, medieval streets and a traditional high street full of independent shops.



Adult: £18  
Senior: £17  
Child: £10

## Merry Hill

Friday 20th February 2026

Merry Hill Shopping Centre offers a huge array of Shops both indoor and outdoor – great day out for all shopaholics. And with more eating and drinking options than ever before Merry Hill has everything you need under one roof for a great day out.

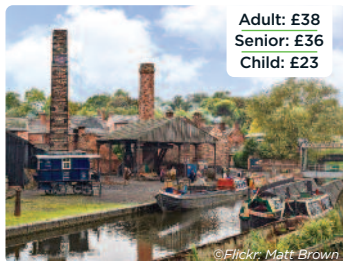


Adult: £18  
Senior: £17  
Child: £10

## Black Country Museum

Friday 20th February 2026

The award winning open air Black Country Museum provides an immersive experience from start to finish, one that tells the story of the very first industrialised landscape in Britain.



Adult: £38  
Senior: £36  
Child: £23

## Orchid Festival at Kew Gardens

Tuesday 24th February 2026

Transport yourself from the cold British winter to exotic places with an amazing floral celebration in the Princess of Wales glasshouse. Explore the beauty of stunning displays - the 2026 Kew Orchid Festival is a veritable floral extravaganza brightening up the winter months. Delve into some of Kew's work all over the world. Kew is the world's largest botanical gardens. Visit the



Adult: £48  
Senior: £47  
Child: £27

Davis Alpine House or the Treetop walkway. Enjoy the Temperate House – the largest Victorian glasshouse in the world, home to 1,500 species plant species. *\*Please note the main house may not be open.*



## The Valley at Evesham & Moreton-in-Marsh

**Tuesday 3rd March 2026**

Starting at Moreton-in-Marsh to visit the weekly market we will then continue onwards to The Valley at Evesham a shopping and leisure destination situated in the heart of Worcestershire.



**Adult: £21**  
**Senior: £20**  
**Child: £12**

## Thriplow Daffodil Festival

**Saturday 21st March 2026**

Daffodil displays, attractions and open gardens await at the popular Thriplow Daffodil Festival with street food, drink and music aplenty for you to enjoy whilst you take in the atmosphere.



**Adult: £36**  
**Senior: £35**  
**Child: £23**

## National Arboretum & Lichfield

**Sunday 8th March 2026**

With 150 acres, over 300 memorials and an abundance of wildlife, The National Arboretum is a place of reflection. You will arrive in time to participate in the Sunday Service. Lichfield is a wonderful city to explore. With the city parks, magnificent Lichfield Cathedral, museums and independent shops, you can spend time wandering this 800-year-old city visiting Lichfield attractions.



**Adult: £23**  
**Senior: £21**  
**Child: £13**

## Duxford Imperial War Museum

**Saturday 21st March 2026**

**Coach only.** IWM Duxford is Europe's largest air museum. Walk through the same hangars and buildings as those who served in RAF Duxford. We will drop and collect you from Duxford. *\*Entrance fee will need to be paid on arrival and is not included in the advertised price.*



**Adult: £24**  
**Senior: £23**  
**Child: £15**

## Mystery Tour

**Monday 9th March 2026**

Enjoy a ride round the local area with an opportunity to buy a spot of lunch along the way. A favourite for many years, these tours are always busy and are a great way to meet old friends and new.



**Adult: £22**  
**Senior: £20**  
**Child: £10**

## Cadbury World & Birmingham

**Sunday 22nd March 2026**

Enjoy some chocolate fun with a visit to Cadbury World. Cadbury World is a self-guided experience, where you will learn all about Cadbury chocolate! Explore the Chocolate Quest, take a ride on the 4D Chocolate Adventure or get hands on in the new 'have a go' experience. Take a visit to the shop for chocolate goodies, just in time for Easter. Afterwards spend a couple of



**Adult: £38**  
**Senior: £37**  
**Child: £26**

hours in Birmingham for shopping before we head home.

## Birmingham Shopping

*Sunday 22nd March 2026*

Shop designer brands, high street fashion or treat yourself at one of the many great restaurants on offer. Visit the worlds biggest Primark and grab yourself a bargain.



**Adult: £18**  
**Senior: £17**  
**Child: £10**

## Rutland Water Cream Tea Cruise & Stamford

*Friday 10th April 2026*

Enjoy a leisurely cruise with commentary around Rutland Water, England's largest man made lake. Widely regarded as one of the finest stone towns in England, Stamford is a quintessential English town that is a favourite with film and TV producers and it's not hard to see why.



**Adult: £40**  
**Senior: £39**  
**Child: £24**

## Webbs of Wychbold & Worcester

*Monday 30th March 2026*

Webbs, Wychbold is one of the biggest family-owned garden centres in the UK, ideal for gifts for the home and garden. Worcester is a beautiful Cathedral and University City with a fascinating history, located in the heart of the West Midlands on the banks of the River Severn.



**Adult: £21**  
**Senior: £20**  
**Child: £12**

## Georgie's Canal Cruise with Fish and Chips

*Monday 13th April 2026*

Enjoy a ride through the countryside to the delightful Georgie's Canal cruise, where we take a scenic jaunt down the canal, complete with a fish and chips lunch.



**Adult: £39**  
**Senior: £37**  
**Child: £30**

## Boundary Mill, Grantham & Lincoln

*Wednesday 8th April 2026*

Calling in at Boundary Mill at Grantham first, you will have time to go shopping or grab yourself a coffee and a cake. Afterwards we will head to Lincoln, brimming with history and heritage. Lincoln is one of England's finest cities. From the tip of the Cathedral to the depths of the Roman waterways, the city is full of fascinating stories just waiting to be discovered. With award-



**Adult: £28**  
**Senior: £27**  
**Child: £15**

winning attractions, great shopping and a wealth of places to eat and drink, this beautiful city makes for the perfect place to visit.

## Blossom Trail with Lunch

*Wednesday 15th April 2026*

Explore the natural beauty that the Vale of Evesham has to offer as we follow the 45 mile route. You will be sure to journey through some of the most idyllic villages that the area has to offer and be captivated. End the day with a lunch stop at The Round of Gras pub before we head home.



**Adult: £39**  
**Senior: £38**  
**Child: POA**



## Hampton Court Tulip Festival

Friday 17th April 2026

With over 120,000 tulips in bloom you will become memorised by floating vases in the fountains to the vast arrays of flower beds forming seas of colour. Recognised as Britain's Largest and Greatest Tulip Heritage Garden at the prestigious World Tulip Summit in 2024, this year's Tulip Festival promises a floral spectacle like no other.



Adult: £57  
Senior: £55  
Child: £30

## Harrogate Flower Show

Saturday 25th April 2026

The spectacular colour of the show gardens, beautiful floral art, plant pavilion and the food theatre all provide Harrogate Flower Show with an unrivalled range of plants and great shopping.



Adult: £56  
Senior: £55  
Child: £31

## Scenic Lunch Tour with a Mystery Lunch Stop

Monday 20th April 2026

**A Catteralls Classic.** A pleasant and scenic drive to a mystery location with a tasty lunch included! These tours are always busy so early booking is advisable. *\*Drinks are not included.*



Adult: £39  
Senior: £38  
Child: £17

## Severn Valley Railway with Lunch at The Downs Inn

Thursday 30th April 2026

Following a scenic ride out and lunch (included) at a nearby restaurant, we board the fabulous Severn Valley Railway for an unforgettable day of adventure travelling by vintage steam train on the UK's leading heritage railway. *\*Please note Steam Trains are subject to change and may result in a diesel train being used.*



Adult: £51  
Senior: £50  
Child: £31

## Harrogate

Saturday 25th April 2026

Harrogate is known for its elegant and diverse range of shops, where art lovers and antique hunters will love the zigzag cobbled streets of the Montpellier Quarter. Make sure to sample some of the locally made beers, pies, confectionery and cakes or perhaps visit the famous Betty's Cafe & Tea Rooms, home to delicious treats since 1919.



Adult: £32  
Senior: £30  
Child: £17

## Mid-Summer Murders Counties & Henley-on-Thames

Wednesday 6th May 2026

We start at Thame with an optional MM walk of about 30 minutes plus time for you to grab a coffee. We then travel to Henley with an optional short MM walk and where you will have time to purchase some lunch. Your tour then continues visiting Dorchester with a visit to the Abbey and a tea stop. We finish our tour with a drive through Warborough (MM village) and Milton



Adult: £44  
Senior: £42  
Child: POA

Common. This tour will have walking involved, but most of it is optional. Otherwise, sit back and relax and enjoy the scenery from the comfort of the coach and with a commentary from a very knowledgeable Blue Badge Guide.

## Spalding Flower Parade & Springfields Shopping Centre

**Saturday 9th May 2026**

The world famous Flower Parade is back. Brightly decorated floats and trailers travel through the town supported by bands, local groups and more. The theme for 2026 is Countries of the World. Live music, food and drink make this a perfect family day out ! With 55 outlet stores, a Blue Diamond Garden Centre, and a children's Adventure Land, Springfields offers something for everyone.



**Adult: £36**  
**Senior: £34**  
**Child: £20**

## Bournemouth

**Sunday 24th May 2026**

With seven miles of golden sands and sparkling sea, the vibrant town of Bournemouth has a lot to offer. Explore the shops, restaurants and award winning gardens



**Adult: £34**  
**Senior: £32**  
**Child: £15**

## Malvern Spring Show

**Sunday 10th May 2026**

Set against a backdrop of the magnificent Malvern Hills, our spring festival returns with flowers, food, crafts and family fun. If you love the great outdoors this show is for you!



**Adult: £50**  
**Senior: £49**  
**Child: POA**

## Poole

**Sunday 24th May 2026**

Poole with its large natural harbour, history and blue flag beaches makes this a great day out for all the family – or take a ferry to Brownsea Island (not included) to see a variety of wildlife, especially red squirrels and birds, and a diverse landscape of woodland, heathland, and a lagoon



**Adult: £34**  
**Senior: £32**  
**Child: £15**

## Weston-super-Mare

**Sunday 17th May 2026**

Weston-super-Mare is home to a wide sandy beach and a long flat promenade. The closest seaside resort to us provides a chance to walk on the pier or enjoy fresh fish & chips whilst enjoying the sea air.



**Adult: £31**  
**Senior: £30**  
**Child: £15**

## Wedgwood Factory Tour & Trentham Gardens

**Tuesday 26th May 2026**

The World of Wedgwood is a gold award-winning tourist destination in the heart of the Staffordshire Countryside. Home to Stoke-on-Trent's most prestigious brand, Wedgwood and he galleries of the V&A Wedgwood Collection. With creative studios, the Wedgwood Factory, Wedgwood Tea Room alongside retail outlets, eateries and bars this makes a great day out.



**Adult: £47**  
**Senior: £46**



## Wedgewood Factory Tour & Trentham Gardens

**Tuesday 26th May 2026**

Whether you are looking for a garden of tranquility or a day of retail therapy, Trentham Gardens and Shopping Village offers it all with 725 acres of award-winning natural beauty, ancient woodland, gardens that change with the seasons and a mile-long, Capability Brown-designed Trentham Lake as well as a unique shopping experience, this day trip really is a great day out.



**Adult: £47  
Senior: £46**

## Trentham Gardens

**Tuesday 26th May 2026**

Whether you are looking for a garden of tranquility or a day of retail therapy, Trentham Gardens and Shopping Village offers it all with 725 acres of award-winning natural beauty, ancient woodland, gardens that change with the seasons and a mile-long, Capability Brown-designed Trentham Lake as well as a unique shopping experience, this day trip really is a great day out.

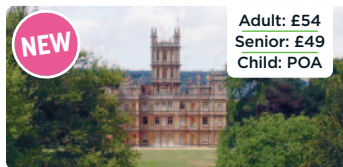


**Adult: £35  
Senior: £34**

## Highclere Castle

**Wednesday 27th May 2026**

In 1842, Sir Charles Barry, who also designed the Houses of Parliament, transformed Highclere House into the present day Highclere Castle. During the First World War, Highclere Castle was converted into a hospital for wounded soldiers run by the 5th Countess of Carnarvon. Then, in the Second World War, Highclere Castle was home to children evacuated from London. There



**NEW**

**Adult: £54  
Senior: £49  
Child: POA**

are between 250 and 300 rooms in the Castle Saloon and during your tour you will explore the main state rooms so familiar from "Downton Abbey".

## Birmingham Shopping

**Thursday 28th May 2026**

Shop designer brands, high street fashion or treat yourself at one of the many great restaurants on offer. Visit the worlds biggest Primark and grab yourself a bargain.



**Adult: £18  
Senior: £17  
Child: £10**

## Birmingham Botanical Gardens

**Thursday 28th May 2026**

The Birmingham Botanical Gardens offers something for everyone, with four glasshouses showcasing tropical rainforest to arid desert. A playground, tearoom and a gift shop are set within the most beautiful gardens in the UK.



**Adult: £27  
Senior: £26  
Child: £18**

## Brindley Place, Birmingham

**Thursday 28th May 2026**

Brindley Place is situated on a lovely canal side location with tree lined squares with restaurants and bars aplenty, only 20 mins walk to the centre of Birmingham and 10 mins walk to the Museum and Art Gallery.

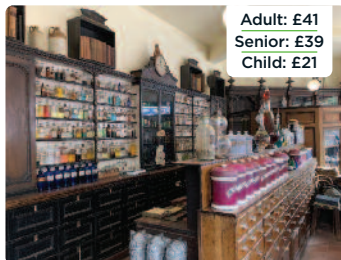


**Adult: £18  
Senior: £17  
Child: £10**

## Blist Hill and Ironbridge

Friday 29th May 2026

A UNESCO World Heritage Site, Ironbridge was one of the birthplaces of the Industrial Revolution. The area itself is now home to many varied museums offering a wealth of knowledge, including Blist Hill Victorian Town  
\*Entrance to Blist Hill Included.



Adult: £41  
Senior: £39  
Child: £21

## Shrewsbury (Coach Only)

Wednesday 3rd June 2026

Shrewsbury is home to a delightful jumble of winding medieval streets and timbered Tudor Houses. The old world charm and relaxed atmosphere of this market town on the Welsh border makes for a great day out!



Adult: £24  
Senior: £23  
Child: £15

## Skegness

Sunday 31st May 2026

The largest resort on the Lincolnshire coast, Skegness is home to clean sandy beaches, tasty fish & chips, ice cream on the promenade and many attractions, making for a popular day out.



Adult: £30  
Senior: £29  
Child: £15

## Scenic Tour with Mystery Lunch

Monday 8th June 2026

A Catteralls Classic – a pleasant and scenic drive to a mystery location with a tasty lunch included! These tours are always busy so early booking is advisable. \*Drinks are not included.



Adult: £39  
Senior: £38  
Child: £20

## Shrewsbury & River Cruise

Wednesday 3rd June 2026

Before your cruise we will visit Shrewsbury town so you can grab a bite to eat and do some shopping. In the afternoon we will take a voyage down the River Severn taking in the history and the various landmarks. There really is no better way to see the town than sailing down the river it was built on.



Adult: £39  
Senior: £38  
Child: £20

## Weston-super-Mare

Sunday 21st June 2026

Weston-super-Mare is home to a wide sandy beach and a long flat promenade. The closest seaside resort to us provides a chance to walk on the pier or enjoy fresh fish & chips whilst enjoying the sea air.



Adult: £30  
Senior: £29  
Child: £15

# Terms & Conditions

## IMPORTANT NOTICE

We reserve the right to refuse, accept, cancel and / or not proceed with any booking at any time at our sole discretion. All contracts between Catteralls of Southam Ltd and its clients are made on the terms of the booking conditions which are governed by English Law and both parties shall submit to the jurisdiction of English Courts at all times. If a court invalidates some of this contract, the rest of it will still apply. If a court or other authority decides that some of these terms are unlawful, the rest will continue to apply.

Unfortunately, it is inevitable that some of the prices or details contained within our brochure may have changed since it was printed. We also reserve the right to correct errors at any time prior to the price being confirmed at the time of booking. When you book your holiday you will be informed of any changes to any of the relevant details within our brochure which have occurred prior to you making your booking.

## TERMS AND CONDITIONS

These terms and conditions form a key part of our agreement with you and forms the basis of a legally binding contract between you as the lead name making the booking, (and anyone else in your party) and us Portrest Ltd and Catteralls of Southam Ltd. When you make this booking as the lead name, you undertake that you have the authority to accept, and do accept, on behalf of your party the terms of these booking conditions, which are governed by English Law. Please take time to read through them and you will see that they set out in simple terms what responsibilities we both have when entering into a contract.

### 1. MAKING A BOOKING

You can write to us telephone us, or contact us via email the contract is made when your booking is entered onto our reservation system and we issue a confirmation of booking. We will send the confirmation via email or posted letter usually within seven days of your booking. Please READ and check this confirmation very carefully to ensure all the information is correct and tell us immediately of any errors.

### 2. PAYMENT TERMS

At the time of booking you will need to pay a nonrefundable deposit for each person travelling. The deposit for 4/5/6-day UK based tours is £120 per person. The deposit for 2/3 day UK based tours is £100 per person. The deposit for all continental (non-UK) tours is £200 per person.

The balance is due 8 weeks prior to departure. If you book within our balance due period, you will need to pay the total holiday cost at the time of your booking. If you do not pay the outstanding balance for your holiday on or before the date when it is due we may cancel your booking and you will be required to pay the cancellation charges detailed below. The date of payment will be printed on your confirmation of booking.

### 3. REQUESTS TO CHANGE BOOKING ARRANGEMENTS

After we have issued our booking confirmation we will do our very best to accommodate any changes you may want to make, but we cannot guarantee to do so. Any changes must be notified to us in writing and signed by the lead name. If we are able to make the changes, we reserve the right to charge an amendments fee of £25 per booking per occasion, which will be payable plus any additional charge(s) for the facilities requested. No alterations will be permitted after balance due.

### 4. ALTERATIONS AND CANCELLATIONS BY US

Changes to confirmed holiday arrangements sometimes have to be made and we reserve the right to do so. Where a significant change is made before departure, we will notify you in writing. Occasionally, before departure, we may be constrained by circumstances beyond our control to make a significant alteration to any of the main characteristics of the travel

services which form part of your confirmed booking or to any special requirements which we have accepted.

Our holidays require a minimum number of bookings to enable us to operate them and we reserve the right to cancel any holiday where this minimum number is not achieved. The minimum number applicable to any particular holiday depends on a number of factors. Failure to achieve the applicable minimum number does not, however, oblige us to cancel.

In the event we have to significantly alter any of the main characteristics of your confirmed arrangements or accepted special requirements, we will provide you with the following information in writing as soon as possible: (i) the proposed alteration and any impact this has on the price; (ii) in the event that you do not wish to accept the alteration, details of any substitute package we are able to offer (including the applicable price); (iii) your entitlement to cancel your booking and receive a full refund if you do not want to accept the alteration or any substitute package offered; and (iv) the period within which you must inform us of your decision and what will happen if you don't do so.

Occasionally, it may be necessary to cancel confirmed holiday arrangements. We have the right to terminate your contract in the event (i) we are prevented from performing your contracted holiday arrangements as a result of unavoidable and extraordinary circumstances and we notify you of this as soon as reasonably possible or (ii) we have to cancel because the minimum number of bookings necessary for us to operate your holiday has not been achieved and we notify you of cancellation for this reason as referred to below. Where we have to cancel your holiday in these circumstances, we will refund all monies you have paid to us but will have no further or other liability to you including in respect of compensation or any costs or expenses you incur or have incurred. We will of course endeavour to offer you comparable alternative arrangements where possible which you may choose to book in place of those cancelled. We also have the right to cancel if you fail to make payment in accordance with the terms of your contract, in which case cancellation charges will apply.

### 5. MAKING A COMPLAINT

If you have a complaint during your holiday you must inform the driver / representative as soon as possible to allow them the opportunity to resolve the problem as quickly as possible. If you encounter any problems with the hotel you must inform the hotel staff immediately to allow them the opportunity of rectifying the matter, in most cases these difficulties can be rectified on the spot. If, on your return from holiday, you remain dissatisfied you should write within 14 days to Catteralls of Southam Ltd. In your letter you will need to quote your booking reference number, destination and departure date. If you do not tell us at the earliest opportunity about a problem giving rise to your complaint we cannot take steps to investigate and rectify it. In deciding how to respond to your complaint we will take into account the date you first drew the problem to the attention of our driver/courier or supplier. The Company must receive written complaints within 14 days of your return from the holiday. No liability will be accepted for complaints not passed on to the driver nor for those received beyond the stated time (14 days).

### 6. COACH ALLOCATION

Due to operational reasons (breakdown, availability, low number of passengers etc.) Catteralls of Southam Ltd reserve the right to use midi or standard (no toilet) coach rather than having to cancel your tour or day trip. We will endeavour to inform clients beforehand unless unforeseen circumstances prevent us from doing so.

### 7. COACH SEATING

Coach seating is allocated at time of booking; however, we do reserve the right to change



seat allocation seating prior to departure if necessary to accommodate further passengers. Requests for particular seats can be made when booking but cannot be guaranteed.

#### **8. HEALTH AND SAFETY ON HOLIDAY**

Some tours in our brochure require average physical ability as there may be an element of walking involved. This does not imply other itineraries are suitable and the company will not accept liability for omissions. It is the responsibility of the client to check directly with our staff prior to booking. In some countries, standards of infrastructure, safety and hygiene may be lower than those to which we are accustomed in the UK. You should therefore exercise greater care for your own protection. Further information can be obtained from your GP or from your travel agent who can provide you with the leaflet "Health Advice for Travellers" published by the Department of Health. When travelling to member states of the EC, we strongly advise you to carry with you a European Health Insurance Card. This European health card allows you to free or reduced health care costs whilst in member states. It is very important that you declare any serious illness or ailments at the time of booking. Some people may be at risk from discomfort or deep vein thrombosis (DVT) if they remain immobile on a journey for a long period of time. If you are planning to undertake a bus or coach journey of more than 3 hours you should consult your doctor if you have ever had DVT or pulmonary embolism, a family history of clotting conditions, cancer or treatment for cancer, a stroke, heart or lung disease or if you have had major surgery in the past 3 months. We reserve the right to refuse any booking in the absence of a doctor's certificate confirming that you are fit to travel. During the journey we will provide comfort stops as frequently as possible. During these stops you are encouraged to get off the coach and walk around. Exercise reduces any discomfort, which may be caused by periods of immobility. During any journey you should drink alcohol only in moderation as it leads to dehydration.

#### **9. PASSENGER BEHAVIOUR**

We want all our passengers to enjoy their holiday/day Trip. However, you must remember that you are responsible for your behaviour and the effect it may have on others. When you book with us, you accept responsibility for any damage or loss caused by you. If you or any member of your party is abusive, disruptive, or behaves in a way which in our reasonable opinion could damage property, cause injury to others, or affect their enjoyment of the holiday/day trip, we have the right, after reasonable consideration, to terminate your contract with us. In the event of this happening we will have no further obligations or liability to you.

For the comfort and safety of all passengers, customers are also expected to maintain reasonable standards of personal hygiene during the journey. Where hygiene or conduct issues cause discomfort or distress to other passengers, we reserve the right to:

- Address the matter privately with the passenger concerned.
- Relocate seating or take other reasonable steps to protect passenger comfort.
- Refuse carriage if the issue is not resolved or is severe enough to impact the journey.
- Decline future bookings where repeated complaints have been substantiated.

The coach driver, representative, or authorised official is entitled to refuse you boarding if, in their reasonable opinion, you are under the influence of drink or drugs, you are being violent, abusive, disruptive, or your hygiene or conduct is causing significant discomfort to others. If you are refused boarding on the outward journey, we will regard it as a cancellation by you and will apply cancellation charges according to the scale in Section 6. If the refusal is on the return journey, we have the right to terminate the contract and will have no further obligations or liability to you.

#### **10. OUR LIABILITY**

(1). We promise to make sure that the holiday arrangements we have agreed to make, perform or provide as applicable as part of our contract with you are made, performed or provided with reasonable skill and care. We will only be responsible for what our employees, agents and suppliers do, or do not do, if they were, at the time, acting within the course of their employment (for employees), or carrying out work we had asked them to do (for agents and suppliers).

(2). We will not be responsible for any injury, illness, death, loss (for example, loss of enjoyment or loss of possessions), damage, expense, cost or other sum or claim of any nature or description whatsoever which results from any of the following: the act(s) and/or omission(s) of the person(s) affected; or the act(s) and/or omission(s) of a third party not connected with the provision of your holiday and which were unforeseeable or unavoidable.

(3). Your luggage and other personal possessions are your responsibility, and you must look after them at all times. We do not accept liability for any luggage and personal possessions unless you are able to demonstrate that any damage or loss was caused intentionally or negligently by our employees or suppliers.

#### **11. NO SMOKING POLICY**

We operate a strict no smoking policy on all our coaches. Comfort stops are made en route. The smoking policy of other carriers and suppliers will vary, but in the majority of hotels we use, there is no smoking in any of the guest bedrooms or public areas.

#### **12. PETS**

We do not allow pets to be taken on our holidays. However, Registered Assistance Dogs will normally be accommodated on UK holidays.

#### **13. PICK-UP POINTS, ITINERARIES, TRAVEL DOCUMENTS AND PASSPORTS**

If you live up a long drive or track you will be collected from where this joins the main road as some of our feeder vehicles are too large to access these areas. You are responsible for ensuring that you are at the correct departure point at the correct time, with the correct documents and we cannot be held liable for any loss or expense suffered by you or your party because of an incorrect passport or late arrival at the departure point. Approximately two weeks prior to departure we will advise you with confirmation of your pick-up point and departure time. Certain travel documents may have to be retained by us, your driver/courier will then issue them to you at the relevant time, if you lose a travel document after it has been issued to you we will require you to meet the direct cost charged by the carrier/supplier for the issue of a duplicate or replacement. If you are a British citizen travelling outside the United Kingdom you must have a full UK passport valid for a minimum of six months after your scheduled date of return. Non-UK citizens must seek passport and visa advice from the consulates of the countries you plan to visit prior to making a booking for one of our holidays. The name on the passport must match the name on the ticket. If someone in your party changes name after the booking is made, you must tell us immediately so that we can issue the ticket in the new name. Catteralls of Southam reserve the right to modify itineraries at their discretion in order to meet drivers regulatory hours or to conform to requests from the competent Authorities in the United Kingdom and/or any other sovereign state through which the tour will operate. Included excursions are detailed on the relevant brochure page and refunds will not be made for any excursion not taken. Admission fees to buildings, grounds etc. are not included in the price of the holiday unless otherwise stated on the relevant brochure page. Catteralls Coaches reserve the right to return home earlier than stated on itinerary due to unforeseen circumstances, or operational reasons, without prior notice.

#### **14. DELAYS**

Your travel insurance may cover you for some delays. In addition where you are delayed for more than six hours in any one day, we will seek to minimise any discomfort, and where possible, arrange for refreshments. Catteralls of Southam Ltd reserve the right, in the unlikely event of a coach breaking down, to replace the tour coach with a standard coach.

#### **15. TRAVEL INSURANCE**

We strongly advise you to take out travel insurance to cover medical and repatriation costs, personal injury, loss of baggage and cancellation charges. If you do not have adequate insurance and require our assistance whilst on holiday, we reserve the right to reclaim from you any medical, repatriation or other expenses that we may incur on your behalf, which would otherwise have been met by insurers.

#### **16. SPECIAL NEEDS**

Unfortunately many hotels overseas do not provide adequate facilities for guests with

mobility problems or who suffers from other disabilities. Whether you are planning a holiday overseas or in the UK please notify us before you book if you or any member of your party has special needs or suffers from any disability. If you will need assistance or special facilities in the hotel or may have difficulties in taking part in excursions or boarding/travelling on the coach or other means of transport you must let us know immediately because NOT all of our holidays may be suitable for you. We will accept lightweight wheelchairs for travel, subject to them being able to be folded and stowed away in the luggage hold of the coach. We regret that we are unable to take wheelchairs, which are over 15kg (33lb) in weight. We MUST be advised at the time of booking that a folding wheelchair is being taken on the trip. If you do not tell us you are taking additional items we may not be able to accommodate them. Some attractions and tours may not be suitable for the disabled or passengers with walking difficulties. Electric scooters can be hired at most of our chosen destinations however, if you wish to take your own, due to health and safety and weight issues please contact our reservation staff for further information and guidance. Clients that use nebulisers can take a small hand held (or personal) oxygen cylinder on the coach but for those that need large oxygen cylinders you must arrange for them to be sent directly to the hotel. We cannot carry large cylinders in the lockers/luggage areas for UK or European Tours.

#### **17. SPECIAL REQUESTS**

Special requests for dietary requirements should be notified at time of booking. We will notify the hotel(s) but please note some hotels may not have facilities to cope with special diets and we cannot be held liable for their failure to do so. You should also detail any other requests – for example, low floor a particular room or location etc. we will pass your request to the relevant supplier but this does not guarantee that your request is definite. If a request can be fulfilled you may incur an extra charge, payable either to us or direct to the hotel.

#### **18. SINGLE OCCUPANCY**

We cannot guarantee if you book a single seat that you will not have another single passenger allocated the seat next to you. Single occupancy of rooms when available may be subject to a supplementary charge and this will be shown on the brochure page or advised at the time of booking. NB If you are charged a Single Room Supplement (SRS) it does not mean that your single room is of a better quality or larger in size to any other single room.

#### **19. ENTERTAINMENT**

Some of our hotels arrange additional entertainment. Where this is part of the holiday, details are given on the respective brochure page. Where it is not specified it may still be available but is at the discretion of the hotel and is not guaranteed. It may be withdrawn if there is lack of demand or for operational reasons. The hotel reserves the right to change entertainment, once authorisation has been approved by Catteralls Coaches, at their discretion. When purchasing a tour that contains tickets (theatre/show/concert), while we endeavour to ensure that all members of your party are seated together this cannot always be guaranteed. Booking fees are not refundable in any event.

#### **20. DATA PROTECTION ACT**

In order to process your booking and to ensure that your travel arrangements run smoothly and meet your requirements we need to use the information you provide such as name, address, any special needs/dietary requirements etc. We take full responsibility for ensuring that proper measures are in place to protect your information. We must pass the information on to the relevant suppliers of your travel arrangements such as hotels, transport companies etc. The information may also be supplied to security or credit card checking companies, public authorities such as customs/immigration if required by them, or as required by law. Additionally, where your holiday is outside the European Economic Area (EEA), controls on data protection in your destination may not be as strong as the legal requirements in this country. We will not, however, pass information on to any person not responsible for part of your holiday arrangements. This applies to any sensitive information that you give to us such as details of any disabilities or dietary/religious

requirements. If we cannot pass this information on to the relevant suppliers, whether in the EEA or not, we cannot provide your booking. In making this booking you consent to this information being passed on to the relevant persons. Please note that where information is held by your travel agent, this is subject to your agent's own data protection policy. Your data controller is to a copy of your information held by us. If you would like to see this, please contact us.

We retain your full contact details and other information in secure files and electronic storage facilities, we may use this information to contact you by mail, telephone or electronic means. We will provide you with details of other goods and services including those of selected third parties. If you do not wish to receive further information about products and services, please write to the Marketing Manager.

#### **21. TRAVELLING WITH CHILDREN**

Following recent guidelines from the British Foreign Office, single parents or other adults travelling alone with children should be aware that some countries require documentary evidence of parental responsibility before allowing lone parents to enter the country or, in some cases, before permitting the children to leave the country. The advice strongly suggests that any child or children who travels with a grandparent, aunt etc, must have a signed letter of authority from either the parents or legal guardians of the child and this must be carried with the child's passport, giving permission for the child or children to be taken out of the UK. (For further information on exactly what will be required at immigration, please contact the appropriate embassy or visit [www.fco.co.uk](http://www.fco.co.uk)).

#### **22. ESCORTED TOURS**

We do not guarantee a courier service on all our tours. We will monitor the bookings and provide this service if we feel it is necessary.

#### **23. HOLIDAY CANCELLATION**

You or any member of your party may cancel at any time, provided that the cancellation is made by the lead name and is communicated to our office in writing. You will have to pay the cancellation charges set below. Bookings are not transferable. If you are insured against cancellation you may be able to recover the charges from your insurers. Your cancellation will take effect from the date when we receive written confirmation of your cancellation. You must also return any tickets or vouchers that you have received. A reduction in room occupancy may increase the charges for the remaining passengers by the application of supplements for low occupancy. If passengers are sharing a room and one party member cancels we will cancel the whole booking as the room cannot be utilised for single use occupancy.

#### **24. MOBILITY SCOOTERS**

We are able to carry a maximum of 2 folding mobility scooters on each day excursion or holiday. Scooters must be easily dismantled into separate parts or collapsible and weighing no more than 20kgs. Space must be reserved at the time of booking and passengers need to be travelling with a companion who can assist with the dismantling and stowage of the scooter in the luggage area. Scooters must be powered by dry batteries.

#### **25. PORTERAGE**

Porterage is not guaranteed on all our holidays, our drivers will carry luggage into the reception area of your hotel, where passengers can collect and take to their rooms.

If assistance is required you may ask your driver.

#### **26. SCALE OF CANCELLATION CHARGES.**

Period before departure within which written notice of cancellation of holiday is received (with cancellation charge as a % of your holiday cost).

More than 56 days before departure:	Deposit only
56 days to departure day:	100% of holiday cost

*Please note:* We do not provide insurance and strongly recommend that all passengers obtain their own for all tours.

# Catteralls Holiday and Day Trips Calendar 2026

## JANUARY 2026

M	T	W	T	F	S	S
29	30	31	1	2	3	4
5	6	7	8	9	10	11
12	13	14	15	16	17	18
19	20	21	22	23	24	25
26	27	28	29	30	31	1
2	3	4	5	6	7	8

## FEBRUARY 2026

M	T	W	T	F	S	S
26	27	28	29	30	31	1
2	3	4	5	6	7	8
9	10	11	12	13	14	15
16	17	18	19	20	21	22
23	24	25	26	27	28	1
2	3	4	5	6	7	8

## MARCH 2026

M	T	W	T	F	S	S
23	24	25	26	27	28	1
2	3	4	5	6	7	8
9	10	11	12	13	14	15
16	17	18	19	20	21	22
23	24	25	26	27	28	29
30	31	1	2	3	4	5

## APRIL 2026

M	T	W	T	F	S	S
30	31	1	2	3	4	5
6	7	8	9	10	11	12
13	14	15	16	17	18	19
20	21	22	23	24	25	26
27	28	29	30	1	2	3
4	5	6	7	8	9	10

## MAY 2026

M	T	W	T	F	S	S
27	28	29	30	1	2	3
4	5	6	7	8	9	10
11	12	13	14	15	16	17
18	19	20	21	22	23	24
25	26	27	28	29	30	31
1	2	3	4	5	6	7

## JUNE 2026

M	T	W	T	F	S	S
1	2	3	4	5	6	7
8	9	10	11	12	13	14
15	16	17	18	19	20	21
22	23	24	25	26	27	28
29	30	1	2	3	4	5
6	7	8	9	10	11	12

## JULY 2026

M	T	W	T	F	S	S
29	30	1	2	3	4	5
6	7	8	9	10	11	12
13	14	15	16	17	18	19
20	21	22	23	24	25	26
27	28	29	30	31	1	2
3	4	5	6	7	8	9

## AUGUST 2026

M	T	W	T	F	S	S
27	28	29	30	31	1	2
3	4	5	6	7	8	9
10	11	12	13	14	15	16
17	18	19	20	21	22	23
24	25	26	27	28	29	30
31	1	2	3	4	5	6

## SEPTEMBER 2026

M	T	W	T	F	S	S
31	1	2	3	4	5	6
7	8	9	10	11	12	13
14	15	16	17	18	19	20
21	22	23	24	25	26	27
28	29	30	1	2	3	4
5	6	7	8	9	10	11

## OCTOBER 2026

M	T	W	T	F	S	S
28	29	30	1	2	3	4
5	6	7	8	9	10	11
12	13	14	15	16	17	18
19	20	21	22	23	24	25
26	27	28	29	30	31	1
2	3	4	5	6	7	8

## NOVEMBER 2026

M	T	W	T	F	S	S
26	27	28	29	30	31	1
2	3	4	5	6	7	8
9	10	11	12	13	14	15
16	17	18	19	20	21	22
23	24	25	26	27	28	29
30	1	2	3	4	5	6

## DECEMBER 2026

M	T	W	T	F	S	S
30	1	2	3	4	5	6
7	8	9	10	11	12	13
14	15	16	17	18	19	20
21	22	23	24	25	26	27
28	29	30	31	1	2	3
4	5	6	7	8	9	10



Providing reliable,  
flexible, comfortable  
and affordable coach  
transport since 1972

# Catteralls of Southam

Catteralls Coaches,  
74a Coventry Street,  
Southam CV47 0EA

**[www.travelcatteralls.co.uk](http://www.travelcatteralls.co.uk)**

E-mail: [daytrips@travelcatteralls.co.uk](mailto:daytrips@travelcatteralls.co.uk)

Tel: 01926 813840 / 813192

